

The background features a watercolor-style gradient from light blue on the left to deep purple on the right. Silhouettes of a man's head on the left and a woman's head on the right are rendered in a light, translucent blue color, facing each other. The text is centered in the upper half of the image.

GOD'S
Good
DESIGN

A STUDY IN BIBLICAL
MANHOOD & WOMANHOOD

**What is desirable in a
man?**



God's Good Design

Creator and Created

Man's Purpose

Man's Hurdles / Redemption

Woman's Purpose

Woman's Hurdles / Redemption

Together for the Gospel

We are created in God's image

Created in the image of God,
men and women are absolutely equal
in essence, dignity and value,
but are distinct by divine design

R.E.A.L. Men

Reject Passivity
Expect God's Blessing
Accept Responsibility
Lead Courageously

oakridgecc.org



“What is desirable in
a man is his
kindness.

Proverbs 19:22



Sin Marred Design

“Sin is any failure to conform to the moral law of God in act, attitude or nature.”

Wayne Grudem, Systematic Theology



Sin Marred Design

Genesis Chapter 3

the introduction of sin into
the world.



Sin Marred Design

Intentional act

Omitted Act



Sin Marred Design

Intentional act

Omitted Act

Unconscious Act



Sin Marred Design

How can I know all the sins lurking in my heart? Cleanse me from these **hidden** faults. Keep your servant from **deliberate** sins! Don't let them control me.

Psalm 19:12,13



Sin Effect

Separation

Dysfunction

Death



Sin Effect

“For the wages of sin is death”

Romans 6:23



Corrupted Ideal

Internal

Cultural

Spiritual Attack

Ephesians 2:1-3



Corrupted Ideal

Internal - selfish aggression

- provider vs. controller
- initiator vs. aggressor
- strength vs. domination



Corrupted Ideal

Internal - selfish passivity

- servant vs. passive
- protector vs. enabler
- humble vs. apathetic



Impact on men

Cultural Pressures

- parodies of manhood
- direct attack



Impact on men

Spiritual Warfare

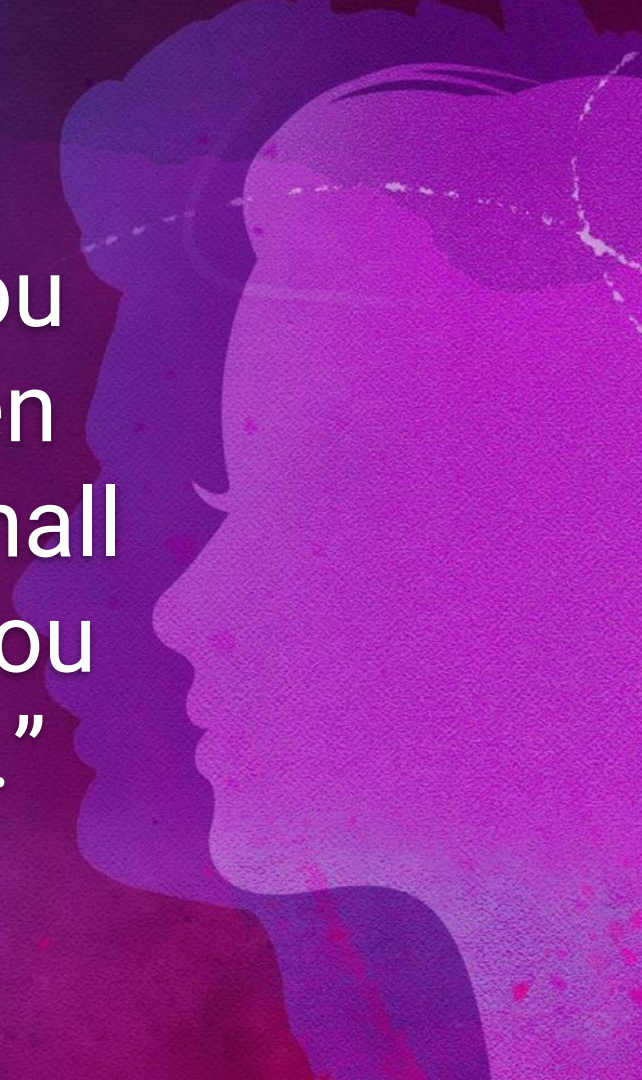
- Deception
- Destruction



Prophecy

“I will put enmity between you and the woman, and between your seed and her seed; He shall bruise you on the head and you shall bruise him on the heel.”

Genesis 3:15



The Good News

“The wages of sin is death,
but the free gift of God is
eternal life in Jesus Christ
our Lord.”

Romans 6:23



Questions for men

Are the people you influence
flourishing or dying?

Are you building or consuming?

Are you awake or deceived?



Positive Effect

“Your wife will be like a fruitful grapevine, flourishing within your home. Your children will be like vigorous young olive trees as they sit around your table.”

Psalm 128:3



Contrasts

Spiritual
Fleshly

servant vs.

passive

protector vs.

enabler

humble vs.

apathetic

: |



“What is desirable in
a man is his
kindness.

Proverbs 19:22



Redeemed Design

Forgiveness



Restoration



Healthy
Influence



The background features a watercolor-style gradient from teal on the left to magenta on the right. Silhouettes of a man's head on the left and a woman's head on the right are rendered in a light, translucent style, facing each other. The text is centered in the middle of the image.

GOD'S
Good
DESIGN

A STUDY IN BIBLICAL
MANHOOD & WOMANHOOD